



BOLUNGARVÍK

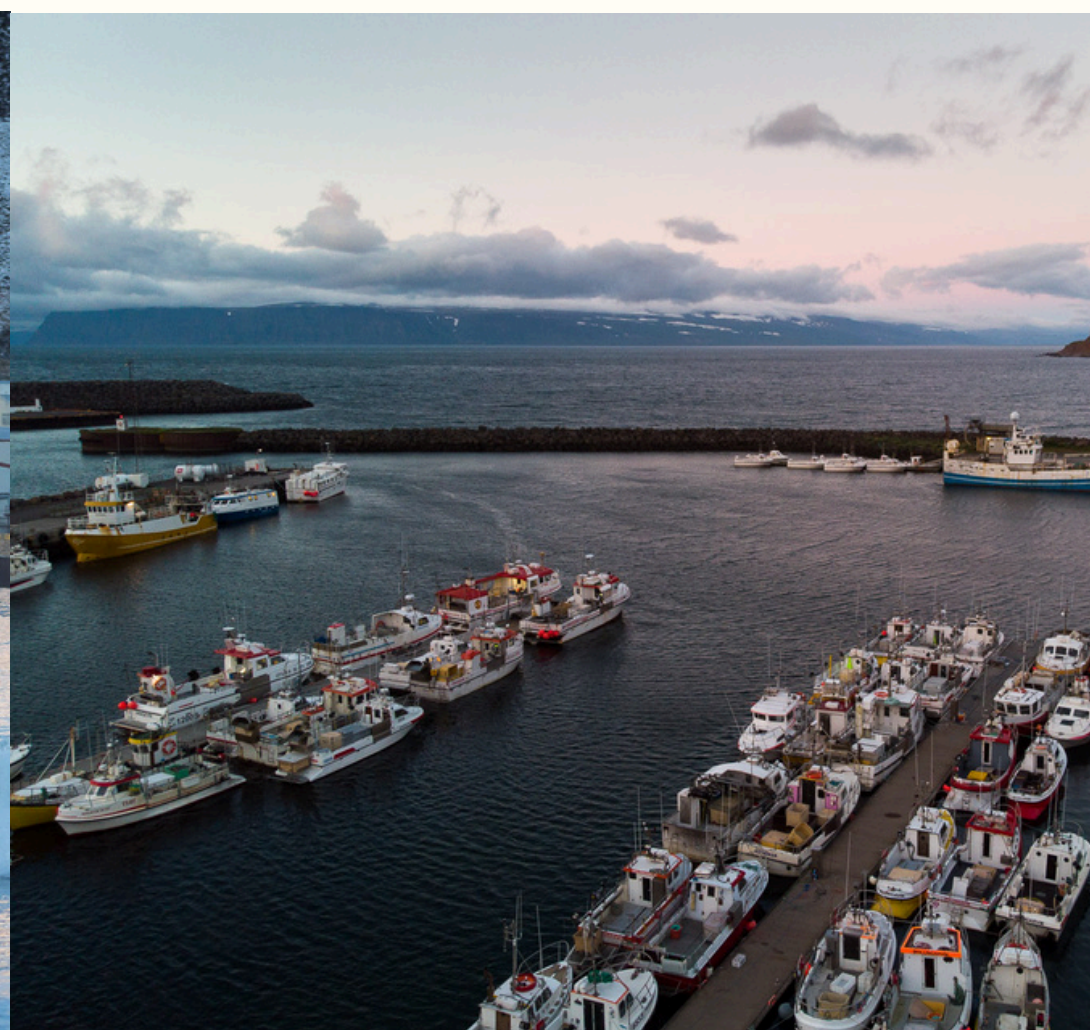




BOLUNGARVÍK

Bolungarvík is one of Iceland's oldest fishing villages, with roots dating back to the Settlement Age. This beautiful town, nestled at the foot of majestic mountains in the northern Westfjords, is a treasure for those looking to experience Icelandic nature and culture in its purest form. The town's history as a fishing hub has shaped its community and is evident in the everyday life of its residents.

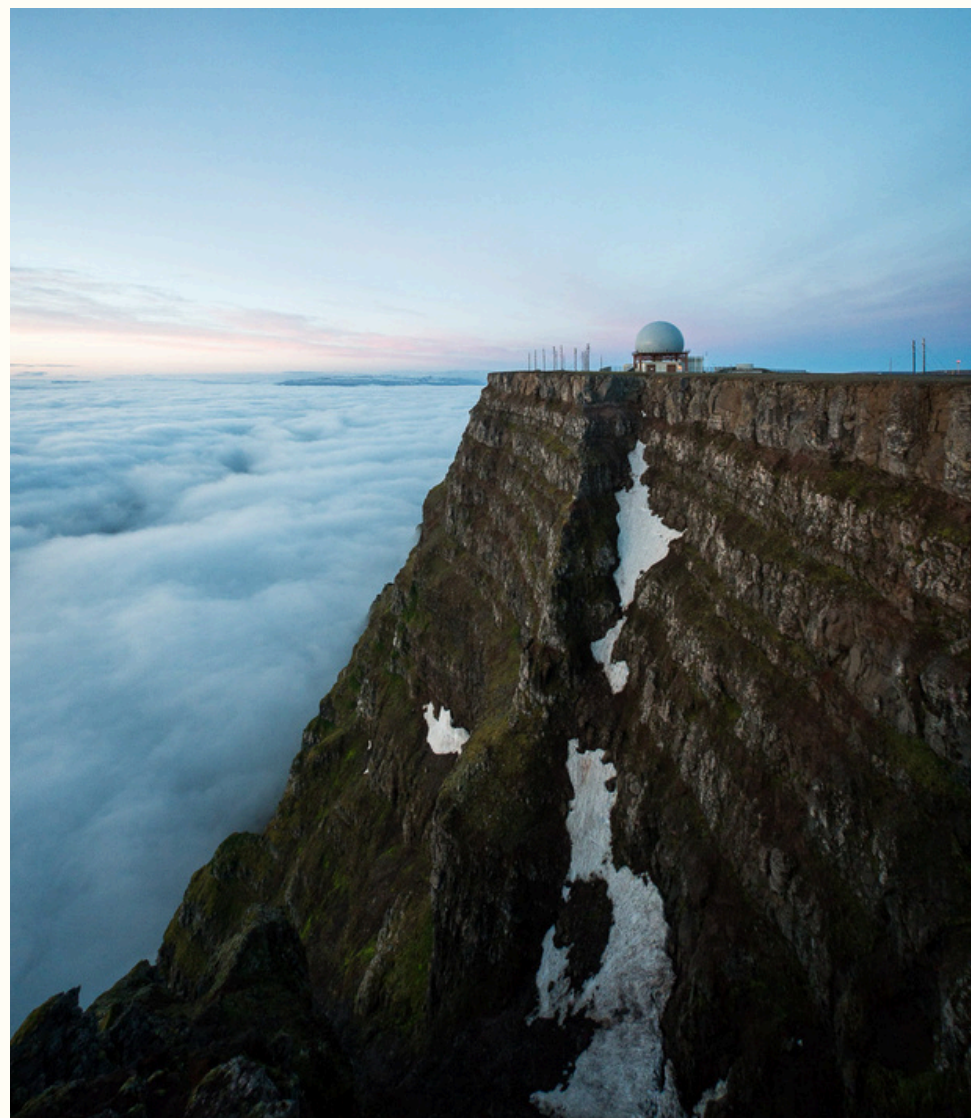
The town's main landmarks include Bolafjall, with its stunning views of the Westfjords, and the Ósvör Maritime Museum, where visitors can glimpse the life and work of 19th-century fishermen. Bolungarvík also offers outdoor activities like hiking and biking along the old Óshlíð coastal path. The welcoming locals and excellent services make Bolungarvík an ideal destination to experience the Westfjords at their best.



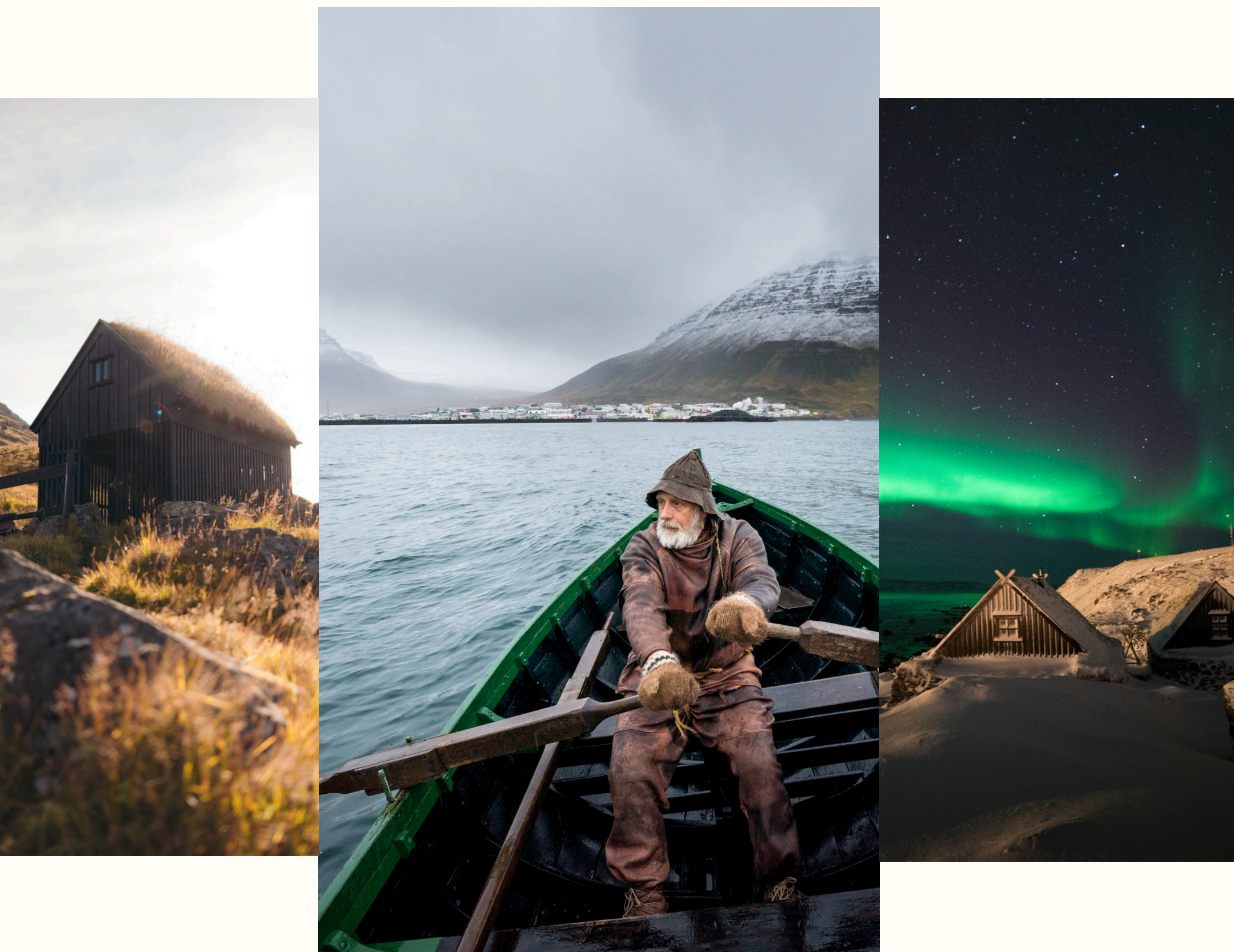


outstanding **BOLAFJALL**

Bolafjall is one of the most iconic landmarks of Bolungarvík. At the summit, 638 meters above sea level, a viewing platform offers breathtaking views of the Westfjords and Ísafjarðardjúp. In clear weather, the view is exceptional, but even on cloudy days, it's awe-inspiring to gaze out over the clouds. The road to the top is only open during the summer months, and the journey itself is an adventure.



In addition to its natural beauty, Bolafjall is also known for its role in airspace monitoring, with an active NATO radar station at the summit. The viewing platform allows visitors to feel as if they're floating above the dramatic landscapes of the Westfjords. Whether looking out at the fjords on a clear day or watching clouds stretch below, visiting Bolafjall is an unforgettable experience.



Ósvör

Ósvör is a unique reconstructed fishing station from the 19th century, located just outside Bolungarvík. This historic site offers visitors a glimpse into the lives and work of Icelandic fishermen. At Ósvör, you can see the boat Ölver, along with tools and equipment used for fishing during challenging times. The museum also includes a turf house and smoke-house, providing an authentic look at how people lived in harmony with nature while enduring its hardships.

The museum's guides, who are often dressed in traditional clothing, warmly welcome visitors and add to the authentic atmosphere by sharing stories and insights that make the experience unforgettable. Ósvör is not only a historical treasure but also offers stunning views of Ísafjarðardjúp and the coastline. It is a must-see destination for those who wish to explore Icelandic history, culture, and natural beauty all in one visit.



Óshlíð

Óshlíð is an abandoned road connecting Bolungarvík and Hnífsdalur. Built in 1949, it was a major improvement for the daily life of Bolungarvík's residents. However, frequent rockfalls and avalanches made the road dangerous, especially in winter. Today, the Bolungarvík Tunnel has replaced the old road. Óshlíð is now a popular recreational area due to its stunning scenery, but visitors are advised to exercise caution when exploring.

Despite its history of challenges, Óshlíð attracts many outdoor enthusiasts. The trail runs along coastal cliffs, offering breathtaking views of the sea and surrounding mountains. The area is rich in birdlife, with seabirds often nesting in the cliffs. Óshlíð is not only a place of natural beauty but also a reminder of the importance of transportation and how the forces of nature have shaped life in this region.



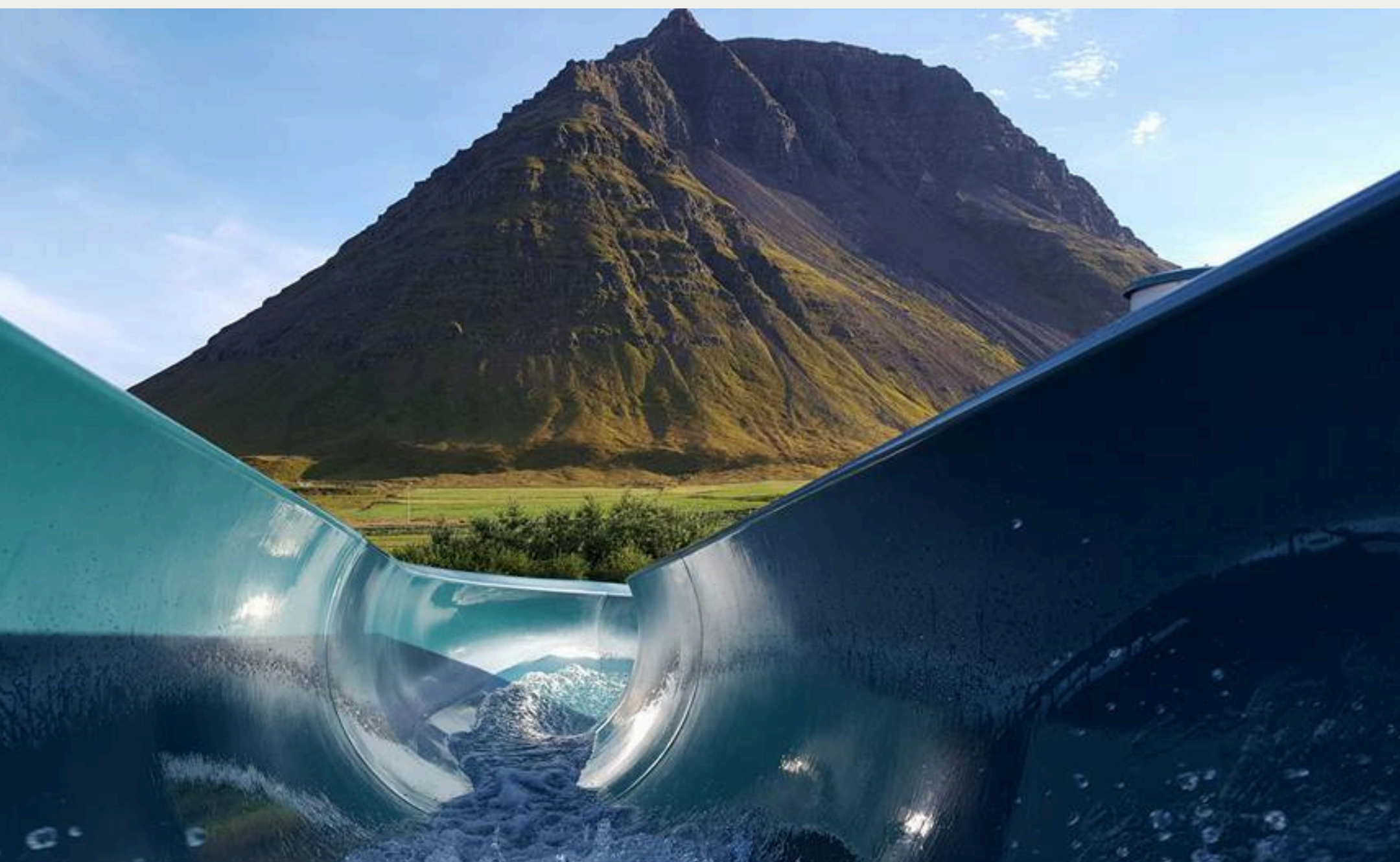


Musteri vatns og vellíðunar

The Bolungarvík Swimming Pool is a cozy and family-friendly facility offering a spacious main pool, perfect for both relaxation and refreshing swims, along with hot tubs where visitors can enjoy the surrounding beauty.

For children, there is a dedicated children's pool, and for those seeking extra relaxation, two hot tubs provide the perfect place to unwind, complemented by a steam room that offers a wonderfully rejuvenating experience. The swimming pool is open year-round and is popular among both locals and visitors looking for a peaceful retreat in a unique setting.

A visit to the pool is the perfect way to end an adventurous day in Bolungarvík, combining relaxation and good company.





Tjaldsvæði Bolungarvíkur

The campsite in Bolungarvík is located in a beautiful and peaceful area, right next to the swimming pool. It offers essential amenities for travelers, including restrooms, electricity, and a playground for children. The campsite is perfect for those seeking tranquility and a connection to nature, with a convenient location close to all services.

The site provides a relaxing and pleasant experience where nature takes center stage. Whether you're looking to unwind or explore the surrounding area, the Bolungarvík campsite is an ideal destination for travelers in the Westfjords.





Skálavík

Skálavík is a peaceful cove located near Bolungarvík, offering a campsite and a unique environment for nature lovers. The area features beautiful hiking trails, black sand beaches, and a tranquil coastal setting, making it an ideal destination for those seeking secluded serenity.

On the way to Skálavík, there is a turnoff to Bolafjall, making it easy to visit both locations on the same trip. Each offers a distinct yet equally unforgettable experience.

The campsite in Skálavík is simple and perfect for those who want to enjoy the calmness of nature by the sea. Facilities include restrooms, but no electricity is available. For those who value peace and a genuine connection with their surroundings, Skálavík is the perfect place to embrace everything nature has to offer.





WE WARMLY WELCOME YOU!



BOLUNGARVÍKURKAUPSTAÐUR